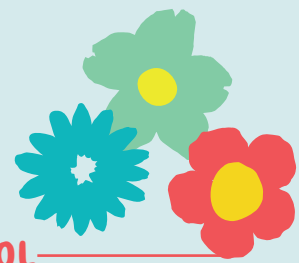


DAY CARE AND PRESCHOOL



All state-licensed child care centers, Monongalia County collaborative pre-Ks, and private preschools that are accredited or registered with the state.

	DAY CARE				PRESCHOOL					
	CCRC FUNDING TIER	★	FT TUITION	WHEN TO CALL	TYPE	AGE RANGE	FT TUITION	WHEN TO CALL		
NORTH	WVU CHILD LEARNING CENTER • 304.293.4866	3	★	\$1,000-\$1,400/mo; WVU discounts	When you know you're pregnant					
	WVU MEDICINE CDC *• 304.598.4788	3	★	Call to inquire						
	YOUNG HEARTS • 304.285.5423	3	★	Call to inquire						
	ADVENTURE TIME CDC • 304.599.5437	2	★	Call to inquire	3 months ahead					
	ALMOST HEAVEN ELC • 304.241.5318	1	★	2025-26: \$220-\$275/wk	When you know you're pregnant	Mon County collaborative				
	LITTLE SPROUTS LEARNING CENTER • 304.906.2007	1	★	2024-25: \$250/wk						
	MINI MOUNTAINEER ELC • 304.322.2865	1	★	2025-26: \$225-\$250/wk	A week or two in advance					
	MONKIDS CDC ** • 304.285.5544	1	★	2024-25: \$251-\$301/wk **	When you know you're pregnant					
	MORGANTOWN LEARNING ACADEMY • 304.296.9554	1	☆			Private	3 and 4 thru 8th grade	\$5,013, half days Aug-June	A year-plus ahead	
	MORGANTOWN MONTESSORI • 304.844.7605	1	★			Private	18 months thru 3rd grade	2024-25: \$800/mo year 'round	4 mo ahead	
	STORYBOOK DAY CARE • 304.598.8010	1	★	2024-25: \$215-\$260/wk	At least a month ahead					
	EAST AND NORTHEAST	SUNCREST CHILDCARE ELC • 304.641.7625	1	★	2025-26: \$220-\$264/wk	When you know you're pregnant				
WVU NURSERY SCHOOL • 304.293.2110		1	☆	\$5,000, half-days thru the school year	When you know you're pregnant	Mon County collaborative				
AMPLIFY CHILDREN'S ACADEMY • 304.333.2544		1	★	2024-25: \$305-\$315/wk	When you know you're pregnant	Private pre-K-1		Preschool \$265, K + 1 \$205		
PLACE OF GRACE EARLY LEARNING • 304.292.4722		1	★	2024-25: \$220-330/wk	6 to 12 months ahead	Mon County collaborative				
PLEASANT DAY SCHOOLS • 304.292.8078		1	★	\$280 per wk	When you know you're pregnant					
SOLID ROCK DAY CARE • 304.288.6575		1	☆	2024-25: \$200/wk	When your child is 1					
TENDER CARE LEARNING CENTER • 304.249.9599		1	★	2025-26: \$300-\$362/wk	6 months ahead					
TRINITY CHRISTIAN SCHOOL • 304.291.4659		1	★				3 and 4 thru high school	Call to inquire		
WILD AND WONDERFUL KIDS • 304.292.0005		1	★	2025-26: \$240-\$260/wk	6 months ahead					
COVENANT CHRISTIAN SCHOOL • 304.292.6050		1	★			Private	3 and 4 thru 8th grade	2025-26: \$6,355/year		
LITTLE TIKES CHILD CARE • 304.292.1377		1	★	2024-25: \$190-\$200/wk						
SOUTH		MINI MOUNTAINEER ELC • 304.284.9999	1	★	2024-25: \$185-\$240/wk	2 to 3 months ahead				
	MORGANTOWN CHILD CARE • 724.562.3388	1	★	2025-26: \$245-\$275/wk	2 months ahead					
	MORGANTOWN ELF • 304.291.5845	1	★	2025-26: \$950-\$1,225/mo	When you know you're pregnant	Mon County collaborative		Mon Co prog free, full days \$715/mo		
	ST. FRANCIS CENTRAL • 304.291.5070	1	☆			Mon County collab + private	2 thru high school	2025-26: \$9,200 August to May	At birth	
	WEST	KINDER HAUS CHILD CARE CENTER • 304.244.0224	3	★	2024-25: \$240-\$250/wk	When you know you're pregnant	Mon County collaborative		Mon Co prog free, full days \$155/wk	
		PRESBYTERIAN CDC • 304.292.2194	1	★	2024-25: \$600-\$725/mo	When you know you're pregnant	Mon County collaborative			

* FOR BENEFITS-ELIGIBLE WVU MEDICINE FAMILIES ONLY ** MON HEALTH FAMILIES HAVE FIRST PRIORITY AND PAY DISCOUNTED TUITION